



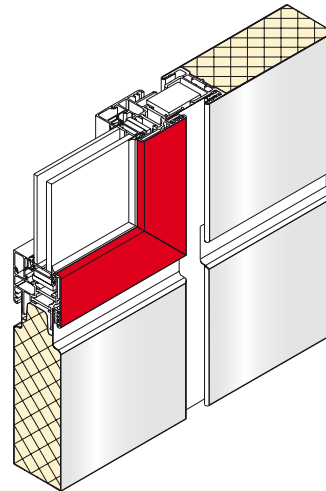
Project : Federal Express (Fedex)
Location : Airport Charles de Gaulle, Roissy Paris, France
Product : HunterDouglas® Façades: type Sandwich Wall
Quantity : 20.000 m²
Special : Colour 7063, special shaped windows
Architect : ADP Paris

HunterDouglas

FAÇADES

PRODUCT INFORMATION:

HunterDouglas Façades: type Sandwich Wall



SYSTEM OVERVIEW SANDWICH WALL

SANDWICH WALL

- Made to measure panels
- Up to 12 meters in length
- Standard widths but any panel module up to 1500 mm wide is available
- Choice of skin materials: aluminium, stainless steel and steel
- Superior flatness
- Texture and formed skin shapes
- 'Total' façade system including fully integrated windows and doors
- Dry sealed system
- Bi-modular joints, identical joint design at all four panel sides
- Foam or mineral wool core
- Certified fire performance (LPCB/FM/CWCT)
- Horizontal and vertical installations
- Unique, concealed mounting system
- For new build and over-cladding projects

MOUNTING TYPES SANDWICH WALL

